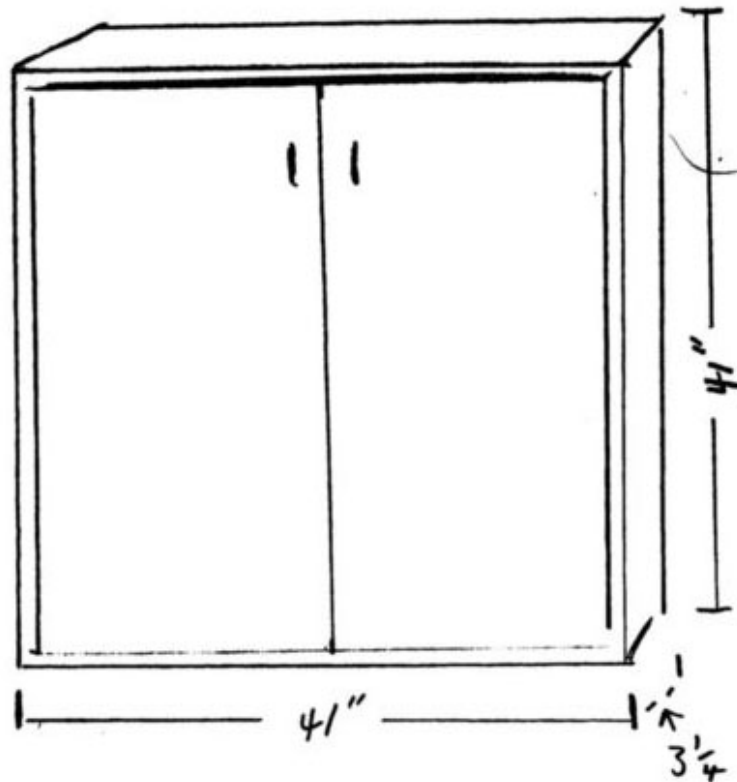
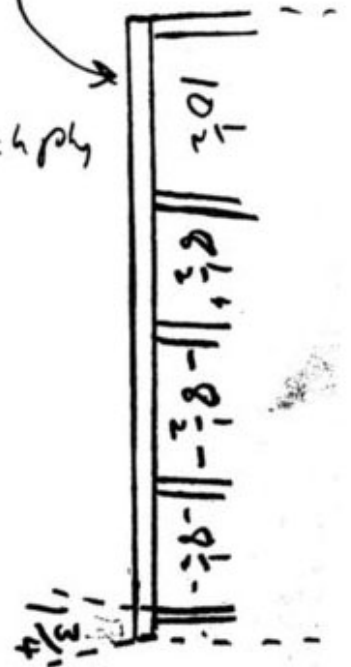


Spry Pant Cabinet



Shelve Space



2) sides $2\frac{1}{2} \times 41$ x $\frac{3}{4}$ Poplar or Birch ply

5) shelves $2\frac{1}{2} \times 39\frac{1}{2}$ x $\frac{3}{4}$ Birch Ply

2) Doors $19\frac{1}{2} \times 39\frac{1}{4}$ x $\frac{3}{4}$ Birch Ply

Face from

2) sides $1\frac{1}{2} \times 41$ x $\frac{3}{4}$ Birch Ply

1) at Top 1×38 x $\frac{3}{4}$ Birch Ply

1) at Bottom $1\frac{3}{4} \times 38$ x $\frac{3}{4}$ Birch Ply