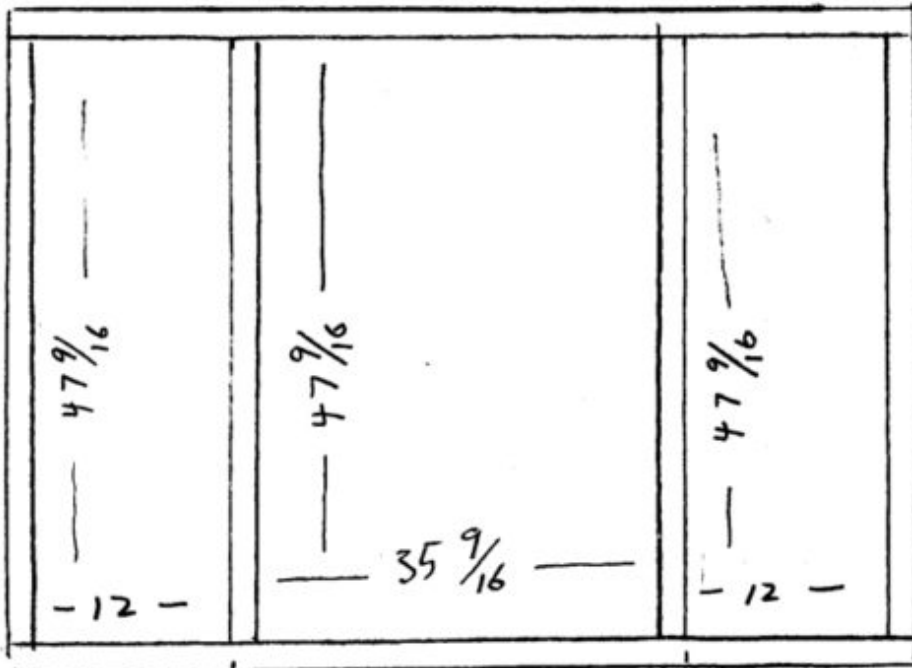


Large Mirror and Chalk Frame



Face cut list

2) $2'' \times 67 \frac{5}{8}$

4) $2'' \times 47 \frac{9}{16}$

Edge Banding = measurements are Heavy

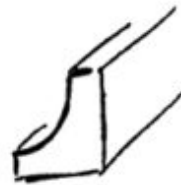
2) $\frac{3}{4} \times 2 \frac{1}{2} \times 72''$ — you will need to cut to length

2) $\frac{3}{4} \times 2 \frac{1}{2} \times 56''$ — same \rightarrow

$\frac{3}{4}$ cove molding

2) 72''

2) 56''



molding to hold chalk

1) $\frac{3}{16} \times \frac{3}{8} \times 67 \frac{5}{8}$



Chalk Boards

2) $\frac{1}{2} \times 12 \frac{1}{2} \times 48''$ or you could $\frac{1}{4}$ Masonite